

SC2 and KET-B Brokerage Event

Food Security | Sustainable Agriculture and Forestry | Marine, Maritime
and Inland Water Research | Bioeconomy | KET-Biotechnology |

Brussels, 26th June 2018



Blue Growth + KET Biotechnology

BEIA COOPERATION PROFILE


Carmen Bobeanu and George Suciuc

Beia Consult International



www.ncp-biohorizon.net

BioHorizon project is funded by the European Commission - Grant Agreement no. 652637

 #BioBrokerage

Projects – www.beiaro.eu

FP7

REDICT: Regional Economic Development by ICT

Cloud Consulting: Cloud-based Automation of ERP and CRM software for Small Businesses

ACCELERATE: A Platform for the Acceleration of go-to market in the ICT industry

eWALL: Electronic Wall for Active Long Living

H2020

SWITCH: Software Workbench for Interactive, Time Critical and Highly self-adaptive Cloud applications

Power2SME: Cloud Platform for intelligent energy use by SMEs

Speech2Platform S2P: Smart, natural language semantic analyser platform to process oriented back-ends

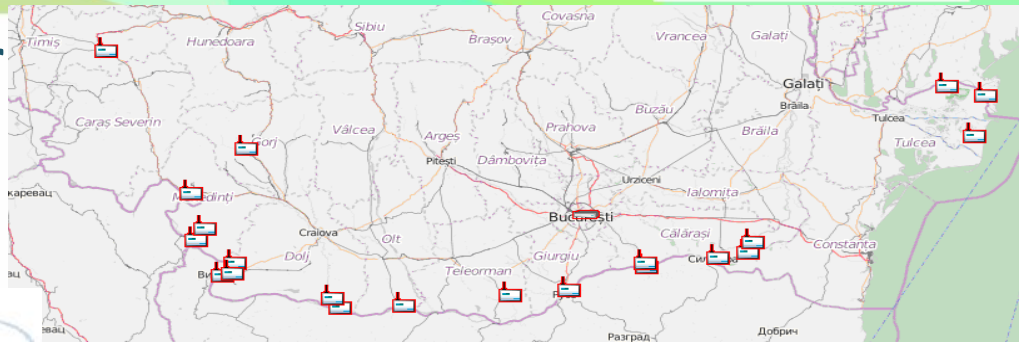
ESTABLISH: Environmental Sensing To Act for a Better quality of Life: Smart Health

National

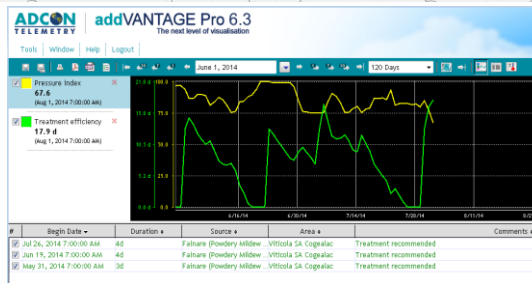
MobiWay: Mobility Beyond Individualism: an Integrated Platform for Intelligent Transportation Systems of Tomorrow

CarbaDetect: Imuno-biosensors for fast detection of carbamic pesticide residues (carbaryl, carbendazim) in horticultural products

Marine and maritime and inland water research - Telemonitoring the Danube



Forestry - SeaForest project



Sustainable agriculture - ADCON telemetry system

Visualizing disease management progress

George Suciu

Beia Consult International

R&D SME

Bucharest, Romania

george@beia.ro

<http://www.beiaro.eu>



Thank you for your attention!