

GREEN CITIES

INTERNATIONAL CENTRE OF COMPETENCE OF URBAN
GREEN

PARIS 2003

greenery was not common
in Inner City of Paris
until 2003.

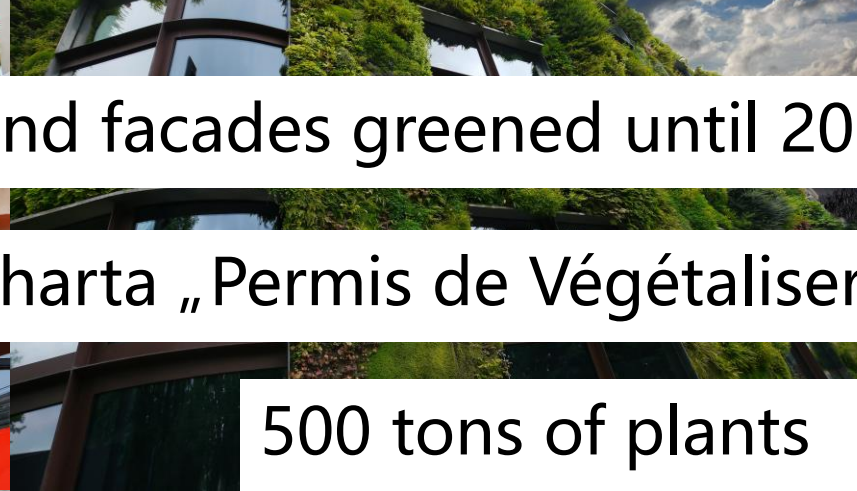


PARIS today

1/3 of roofs and facades greened until 20

Charta „Permis de Végétaliser

500 tons of plants



€ 915 million
EU GI fundings

€ 185 million
EU NBS fundings

Climate Change



cities are affected over proportionally

heat waves will occur more frequently

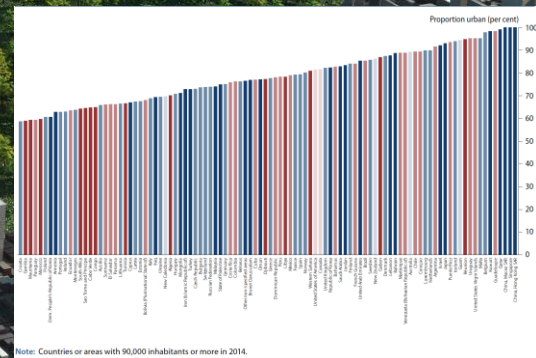
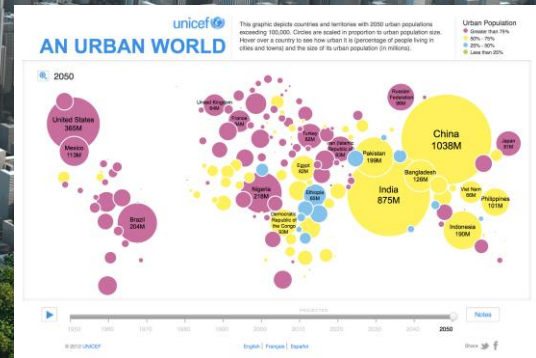
hot days will double

Population growth

until the year 2050

4 out of 5 Europeans

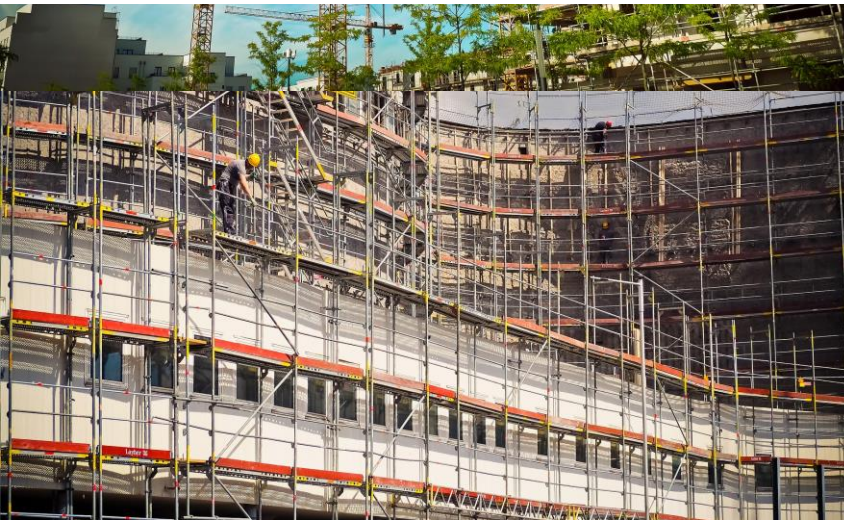
will live in a city



Urban growth

what is built TODAY

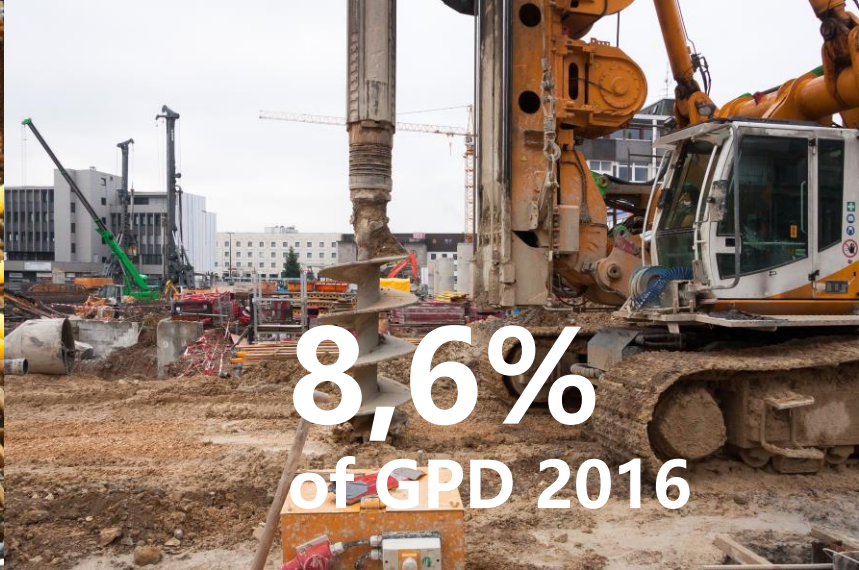
will remain for decades!



42.9
Mio. workers



€ 1,278
billion turnover



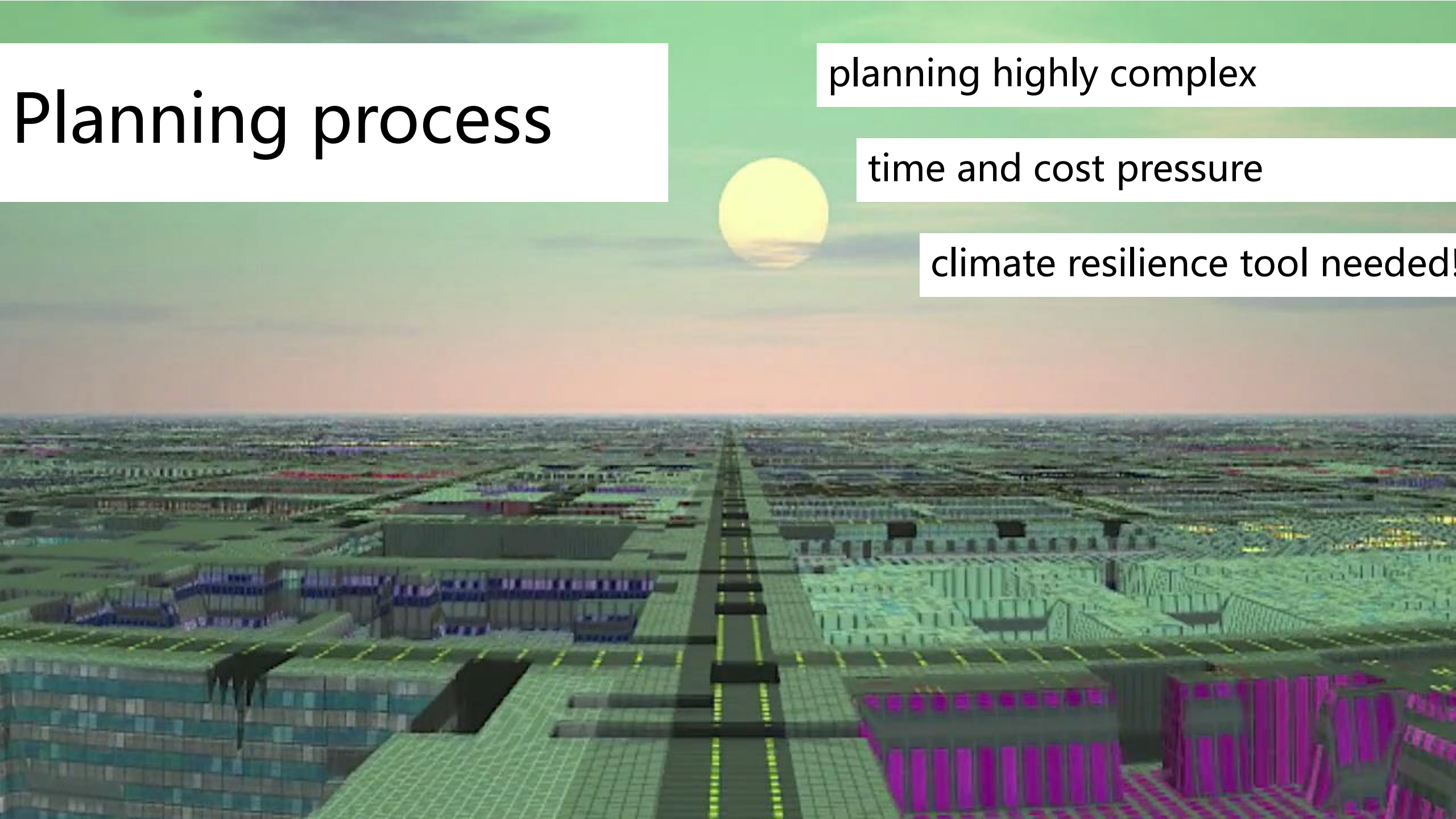
8,6%
of GDP 2016

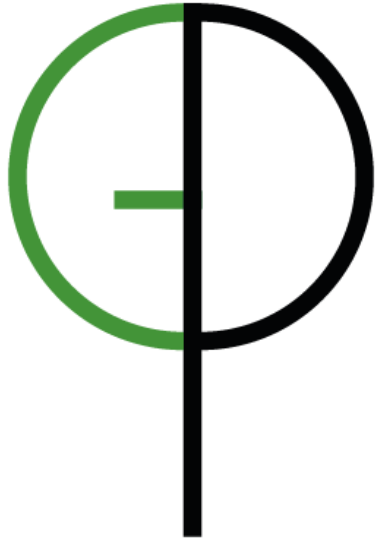
Planning process

planning highly complex

time and cost pressure

climate resilience tool needed!





GREENPASS[®]

enabling livable cities

GREENPASS® features



measurable effects of GI
transparent methods

comparable results

applied in practice

scientifically approved

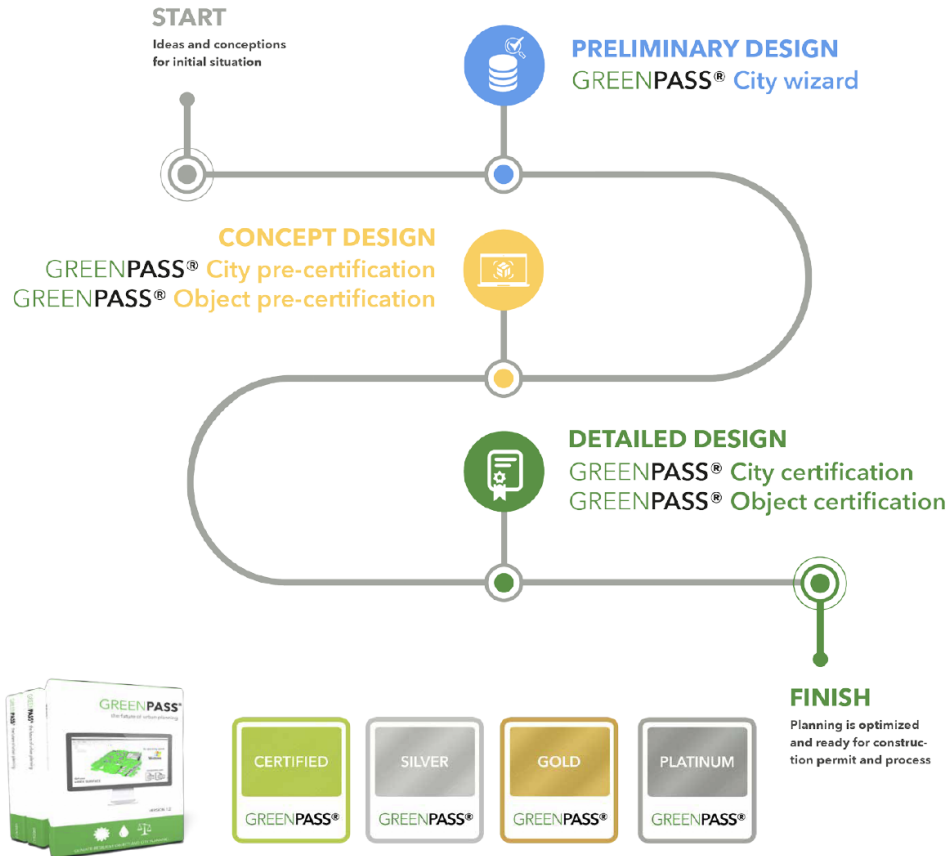
unique set of KPIs

optimization of climate resilience and cost



GREENPASS[®] X

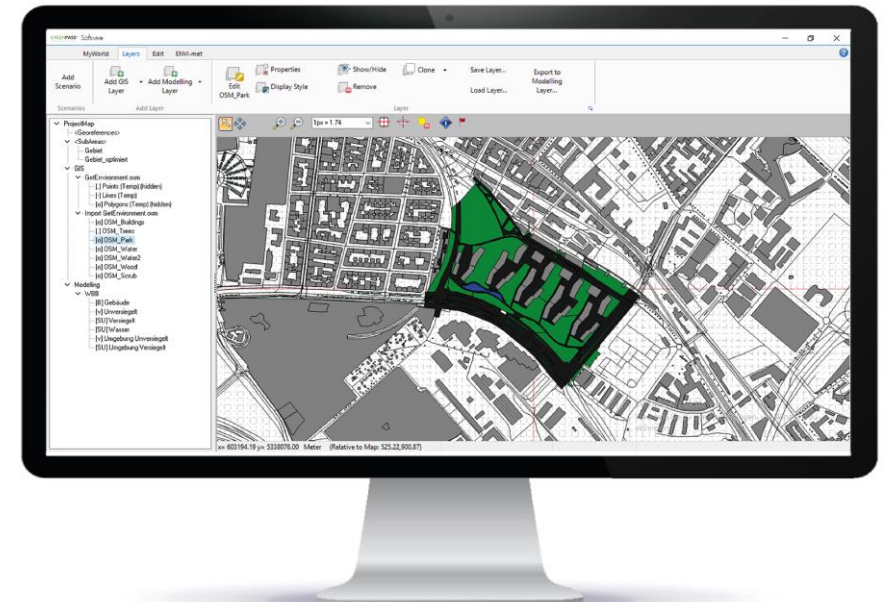
URBAN PLANNING PROCESS



tailored tools for different
phases of planning processes

applicable for cities, districts
and objects

FREE software



GREENPASS[®] ts



optimization of climate resilience

optimization of cost

identification of best design

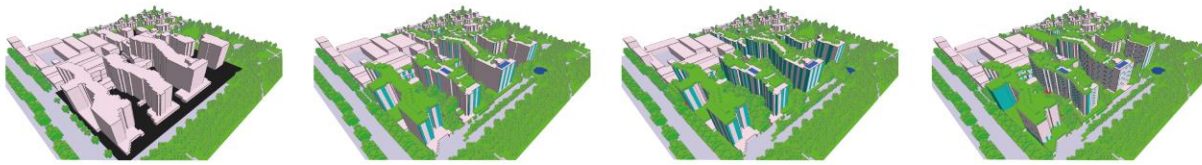
quality control

future proofness

investment security

communication measure

official certification



GREENPASS® samples



- Eurogate II | AT - Vienna
- Seestadt Nord | AT - Vienna
- Biotope City CCA | AT – Vienna
- Hausfeld | AT - Vienna
- FLAIR | AT - Vienna
- IKEA 3 | AT – Vienna
- Living Green Graz | AT - Graz
- Q12 | AT - Graz
- SLIKH | AT - Klagenfurt
- GREENOVATE | AT - Krems
- Jaques Avenue | AUS - Sydney
- W. Main Street Hudson | USA - NY

Thermal Comfort Score - Pet Zones



NAME: BIOTOPE CITY
 SCENARIO: WORST CASE
 CONDITIONS: HOT SUMMER DAY (07/21) - 3 p.m.
 ID: EUROPE-002-2017
 TOOLBOX: GREENPASS® Certification

Thermal Comfort Score - Pet Zones



NAME: BIOTOPE CITY
 SCENARIO: MODERATE
 CONDITIONS: HOT SUMMER DAY (07/21) - 3 p.m.
 ID: EUROPE-002-2017
 TOOLBOX: GREENPASS® Certification

Thermal Comfort Score - Pet Zones



NAME: BIOTOPE CITY
 SCENARIO: MAXIMUM
 CONDITIONS: HOT SUMMER DAY (07/21) - 3 p.m.
 ID: EUROPE-002-2017
 TOOLBOX: GREENPASS® Certification

Thermal Comfort Score - Pet Zones



NAME: BIOTOPE CITY
 SCENARIO: STATUS QUO
 CONDITIONS: HOT SUMMER DAY (07/21) - 3 p.m.
 ID: EUROPE-002-2017
 TOOLBOX: GREENPASS® Certification





Interested?

GET IN TOUCH

office@greenpass.at

www.greenpass.at

